

CATALOGUE 2025



**HYDRAULIC  
BREAKERS FOR  
EXCAVATORS**

**PRE AND POST  
SALE SERVICE**

...  
**36 MONTHS  
WARRANTY**



**WE PRODUCE AND DELIVER  
CONSTRUCTION EQUIPMENT,  
DESIGNED FOR THE BUILDING  
AND CIVIL ENGINEERING MARKET.**

The quality of our products is the result of a careful selection of all suppliers and of the production carried out entirely in our factory. Our products are designed to be **simple, reliable and long-lasting**; they are the result of decades of experience in the sector.

- Fast delivery times
- Possibility to customize the product

**SCAN THE QR CODE TO WATCH  
THE VIDEO**



YouTube



## HIGH PERFORMANCE

Direct compression of nitrogen, loaded on the top, increases the impact energy of the piston and ensures high performance.

## HIGH POWER AND REDUCED CONSUMPTION

The high performance of the hammer is guaranteed even at **low engine speeds**. This reduces the effort for the excavator and **saves fuel**.

## GREAT RELIABILITY

The use of **high-quality materials** and the **high standards of production processes** result in a more efficient product with longer life.

## ONLY 2 MOVING PARTS

The KG series is operated by only 2 moving parts, with considerable **savings in maintenance costs**.



**36 MOIS  
WARRANTY  
ON THE  
ENTIRE  
RANGE**

## FEATURES THAT MAKE THE DIFFERENCE

- **Diesel consumption reduced by 40%.**
- **HIGH FLOW** - The distributor self-regulates the oil flow, avoiding overpressure in the system (starting from model KG200).
- The stroke frequency variation system **reduces blank firings**.
- The remodelled nitrogen charge **increases performance**.
- The assembling bar is designed to distribute **the load evenly**, eliminating the **risk of breakage**.
- **Easily replaceable tool bushing.**
- **Unchanged performance** even with high counter-pressure.



**CHOOSE THE MODEL THAT SUITS YOUR NEEDS**

**MAGNITUDO  
STANDARD**

with upper  
attachment system



**C**

Manufactured in a classic way, the attachment point of the excavator is placed on top.

**MAGNITUDO  
SERIES D**

with upper and side  
attachment system



**D**

The double attachment allows both to gain work in height and to plant stakes through the appropriate accessory.

**MAGNITUDO  
SERIES S**

with upper attachment system  
and silent housing



**S**

The completely closed housing allows the S series to significantly reduce noise during use.

**MAGNITUDO  
SERIES T**

models for backhoes



**T**

Thanks to the particular adapter form it is possible to turn the hammer completely inside the boom.





For excavators from **5q** to **30q**



- **36 months warranty**
- Easy to install
- Compact design, which avoids the risk of damage when working in tight spaces and increases operator visibility
- Available with standard or quick hitch adapter.

	CARRYING MACHINE	OPERATING WEIGHT	OIL FLOW	OPERATING PRESSURE	BLOWS PER MINUTE	BLOW ENERGY	TOOL DIAMETER
<b>KG 60</b>	5 - 10 q	60 kg	9 - 18 l/min	80-100 bar	900-1200min	180 Joule	ø 36 mm
<b>KG 100*</b>	12 - 20 q	100 kg	20 - 25 l/min	90-110 bar	750-1000min	290 Joule	ø 45 mm
<b>KG 120*</b>	18 - 25 q	120 kg	23 - 27 l/min	95-120 bar	800- 950 min	330 Joule	ø 48 mm
<b>KG 150*</b>	25 - 30 q	150 kg	27 - 30 l/min	95-120 bar	700- 900min	350 Joule	ø 50 mm



SUPPLIED WITH  
**1 CONICAL**  
OR **CHISEL** TOOL



SUPPLIED WITH  
**1 STANDARD**  
**HITCH ADAPTER**





For excavators from **32q** to **100q**

## HIGH FLOW SYSTEM

In these models, the distributor self-regulates the oil flow, avoiding overpressure in the system

### KG200



Available versions

**C D S**

### KG250



Available versions

**C D S**

### KG310



Available versions

**C D S**

### KG450



Available versions

**C D S**

#### • 36 months warranty

- Easy to install
- Compact design, which avoids the risk of damage when working in tight spaces and increases operator visibility
- Available with standard or quick hitch adapter.

	CARRYING MACHINE	OPERATING WEIGHT	OIL FLOW	OPERATING PRESSURE	BLOWS PER MINUTE	BLOW ENERGY	TOOL DIAMETER
<b>KG 200*</b>	32 - 45 q	200 kg	30 - 45 l/min	120-140 bar	900 - 950 min	480 Joule	ø 57 mm
<b>KG 250*</b>	45 - 60 q	250 kg	33 - 55 l/min	130-145 bar	750 - 900 min	790 Joule	ø 65 mm
<b>KG 310*</b>	60 - 80 q	310 kg	60 - 90 l/min	130-145 bar	710 - 880 min	950 Joule	ø 70 mm
<b>KG 450*</b>	70-100 q	450 kg	60-110 l/min	140-150 bar	700 - 850 min	1150 Joule	ø 80 mm

\* Also available in the version with silent housing or with double fixing (side and top) • see page 3



SUPPLIED WITH  
**1 CONICAL**  
OR **CHISEL** TOOL



SUPPLIED WITH  
**1 STANDARD**  
**HITCH ADAPTER**





For excavators from **60q** to **95q**

## HIGH FLOW SYSTEM

In these models, the distributor self-regulates the oil flow, avoiding overpressure in the system

**KG230T**  
**KG330T**  
**KG470T**



SUPLIED WITH  
**1 CONICAL**  
OR **CHISEL** TOOL



## MODELS FOR BACKHOES

Thanks to the particular adapter form it is possible to turn the hammer completely inside the boom.

The T-adapter can be easily replaced with a standard adapter for installation of the hammer even on the excavator.

**36 MONTHS WARRANTY**



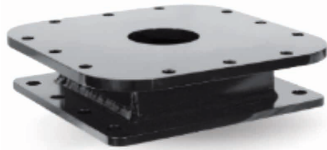
	CARRYING MACHINE	OPERATING WEIGHT	OIL FLOW	OPERATING PRESSURE	BLOWS PER MINUTE	BLOW ENERGY	TOOL DIAMETER
<b>KG 230T</b>	60 q	230 kg	30 - 45 l/min	120-140 bar	900 - 950 min	480 Joule	ø 57 mm
<b>KG 330T</b>	75 - 85 q	330 kg	60 - 90 l/min	130-145 bar	710 - 880 min	950 Joule	ø 70 mm
<b>KG 470T</b>	85 - 95 q	470 kg	60-110 l/min	140-150 bar	700 - 850 min	1150 Joule	ø 80 mm



## SPECIAL APPLICATIONS AND ACCESSORIES

### HITCH ADAPTERS FOR EVERY EXCAVATOR

Skid loader adapter



Quick hitch adapter



Standard  
hitch adapter with pins



Backhoes adapter



### COMPACTOR PLATE

Useful for compacting the material after excavation.



### POST DRIVER TOOL

Used to plant wooden poles.  
Various diameters available.

### ADDITIONALLY:






- Wood splitter tip
- Tip for square or round pre-holes



**ON REQUEST  
YOU CAN CUSTOMIZE  
MAGNITUDO  
WITH THE COLORS  
YOU PREFER**





73040 Aradeo (Lecce) Italy - Via Circonvallazione, 32

 +39 347 27 67 738 • [info@colmac-italia.com](mailto:info@colmac-italia.com)  
 +39 333 80 60 393 • [sales@colmac-italia.com](mailto:sales@colmac-italia.com)  
 +39 353 39 51 822 • [vente@colmac-italia.com](mailto:vente@colmac-italia.com)  
 +39 389 17 36 348 • [venta@colmac-italia.com](mailto:venta@colmac-italia.com)  
 +39 329 18 79 831

 Centralino +39 0836 30 72 33  
 [www.colmac-italia.com](http://www.colmac-italia.com)

